

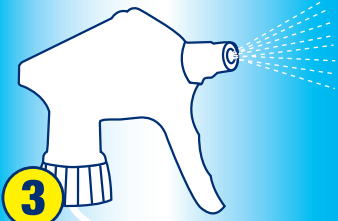
DISINFECTION PROTOCOL



1
INSERT



2
ACTIVATE



3
SPRAY



4
DISINFECT



5
AIR DRY
ALLOW TO AIR DRY,
NO WIPE OR RINSE REQUIRED

DIRECTIONS FOR USE – ACTIVATION

It is a violation of Federal Law to use this product in a manner inconsistent with the labeling. Read the entire label and use strictly in accordance with precautionary statements and use.

When used as directed, Performacide's innovative, cutting-edge Chlorine Dioxide (ClO₂) technology kills germs, viruses*, mold, mildew, fungi, and odor-causing bacteria on hard, non-porous surfaces.

1. To activate the system, tear open the foil package and remove the white inner pouch (**Do not open white inner pouch**). **2.** Place the white pouch in a solid (not clear) 32 oz or 1 gallon bottle filled with water and agitate before initial use. **3.** Allow pouch to activate in water for 1 hour to reach full strength. Agitate for one minute at 15 minute intervals, for a total of five agitations in one hour's time. **4.** Formula must be applied to ensure visible wetness of surface to be treated with an **EXPOSURE TIME OF 10 MINUTES**. **5.** Record date and **USE WITHIN 15 DAYS OF ACTIVATION**.

TO ACHIEVE 100 PPM ClO₂

| SIZE OF POUCH | 0.042 OZ (1.19 G) | 0.17 OZ (5.0 G) |
|-------------------|-------------------------|--------------------------|
| NUMBER OF POUCHES | 1 | 1 |
| AMOUNT OF WATER | 1 QUART 0.946 LITERS | 1 GALLON 3.785 LITERS |

DIRECTIONS FOR USE – DISINFECTION

Disinfectant or Virucide* For Hard, Non-Porous Surfaces: Product must be used with an exposure time of **10 minutes at 100 ppm** to disinfect hard surfaces in medical or veterinary facilities for decontamination.

The formulation may be applied via mop, sprayer or sponge, with heavily-soiled surfaces pre-cleaned as needed by means of a non-disinfectant cleaning agent. **Formula must be applied to ensure visible wetness of surface to be treated.** If applied using pressurized sprayer, user must wear NIOSH/OSHA approved respirator and goggles. Heavily soiled surfaces must be pre-cleaned prior to treatment.

APPLICATION SITES

| | |
|------------------------------|----------------------------|
| Agricultural/Farms | Hotels/Motels |
| Beverage Bottling Facilities | Medical Laboratories |
| Clinics/Doctor Offices | Nursing Homes |
| Day Care Centers | Office Buildings |
| Diagnostic Centers | Pharmaceutical Facilities |
| First-Responder Facilities | Public Buses/Trains/Ships |
| Food Processing Facilities | Rehabilitation Facilities |
| Food Serving Facilities | Shelters |
| Health Clubs/Gyms | Sick Rooms |
| Homes | Schools/School Buses |
| Hospitals | Veterinary Offices/Kennels |

SURFACES SITES

Cages/Carriers/Kennels/Pens
 Bed Frames/Chairs/Non-Porous Furniture
 Computer Equipment/Phones
 Countertops/Tables/Desks
 Door & Drawer Handles/Knobs
 Drinking Fountains/Feeders/Troughs
 Garbage Cans/Pails/Bins/Dumpsters
 Medical Equipment/Sports Equipment
 Non-Porous Surfaces/Floors/Tile/Linoleum
 Sinks/Faucets>Showers/Toilets/Urinals
 Stretchers/Wheelchairs

DISINFECTANT AGAINST

CANDIDA ALBICANS (ATCC 10232)
 LISTERIA MONOCYTOGENES (ATCC 19111)
 METHICILLIN-RESISTANT S. AUREUS (MRSA) (ATCC 33591)
 MYCOBACTERIUM BOVIS (TB) (ATCC 35737)
 PSEUDOMONAS AERUGINOSA (ATCC 15442)
 SALMONELLA ENTERICA (ATCC 10708)
 STAPHYLOCOCCUS AUREUS (ATCC 6538)
 TRICHOPHYTON MENTAGROPHYTES (Athlete's Foot) (ATCC 9533)
 VANCOMYCIN-RESISTANT ENTEROCOCCUS FAECALIS (ATCC 51299)

VIRUCIDE* AGAINST

ADENOVIRUS TYPE 5 (ATCC VR-5)
 CANINE PARVOVIRUS (ATCC VR-2017)
 CORONAVIRUS SARS-COV-2 (the virus that causes COVID-19)
 CORONAVIRUS (ATCC VR-740)
 FELINE CALICIVIRUS (ATCC VR-782)
 HEPATITIS A (HM-175)
 HERPES SIMPLEX-2 (ATCC VR-734)
 HUMAN IMMUNODEFICIENCY VIRUS TYPE 1 (HIV-1) (HTLV-III)
 INFLUENZA-A VIRUS (ATCC VR-544)
 NOROVIRUS (feline calici used as testing surrogate) (ATCC VR-782)
 POLIOVIRUS-1 (ATCC VR-1000)
 RHINOVIRUS TYPE 37 (ATCC VR-1147)
 ROTAVIRUS (WA)
 VACCINIA VIRUS (ATCC VR-119)

For more information visit: Performacide.com